



Whakataka te hau ki te uru
Whakataka te hau ki te tonga
Kia mākinakina ki uta
Kia mātaratara ki tai
E hī ake ana te atakura
He tio, he huka, he hau hū
Tīhei mauri ora!

Cease the winds from the west
Cease the winds from the south
Let the breeze blow over the land
Let the breeze blow over the ocean
Let the red-tipped dawn come with a sharpened air
A touch of frost, a promise of a glorious day.

Core Practices



Engagement

work inclusively and without judgement. See local people as the greatest asset, not a 'problem to be fixed'. Proactively reach out and involve families, whānau and the wider community in discussions and decision making.



Empowerment

go beyond 'social service delivery', proactively work alongside local people in ways that encourage them to participate, lead, make decisions and take action themselves. Encourage people to recognise their own power and help ignite their dreams and aspirations.



Connection

build on the positives first and be welcoming. Use soft doors (e.g. coffee groups, local events) to strengthen social connectedness and build trust. Look to link people and ideas with others who can help, explore shared visions and next steps. Seek to build community in all you do.

Core Practices



Collaboration

work together with multiple stakeholders to maximise energy, impact and resources. Make sure local whānau and community leaders are authentically involved and supported to participate.



Relationship focused

value and nurture strong, respectful, reciprocal and long term relationships with families, whānau and the wider community.



Responsive

be willing to change and adapt how things are done to enable the aspirations of local families, whānau and the wider community.



Think and work holistically

if families and whānau are well, children are well. If our whānau, families and children are well, our communities will be too.



Child Rich
COMMUNITIES

KIA WHĀNGAIA TE RITO, KA PUĀWAITIA TE HARAKEKE



Real Stories Told By Real People

WE SPEAK, YOU LISTEN

DECISIONS MADE ABOUT US, WITHOUT US

2010s plus

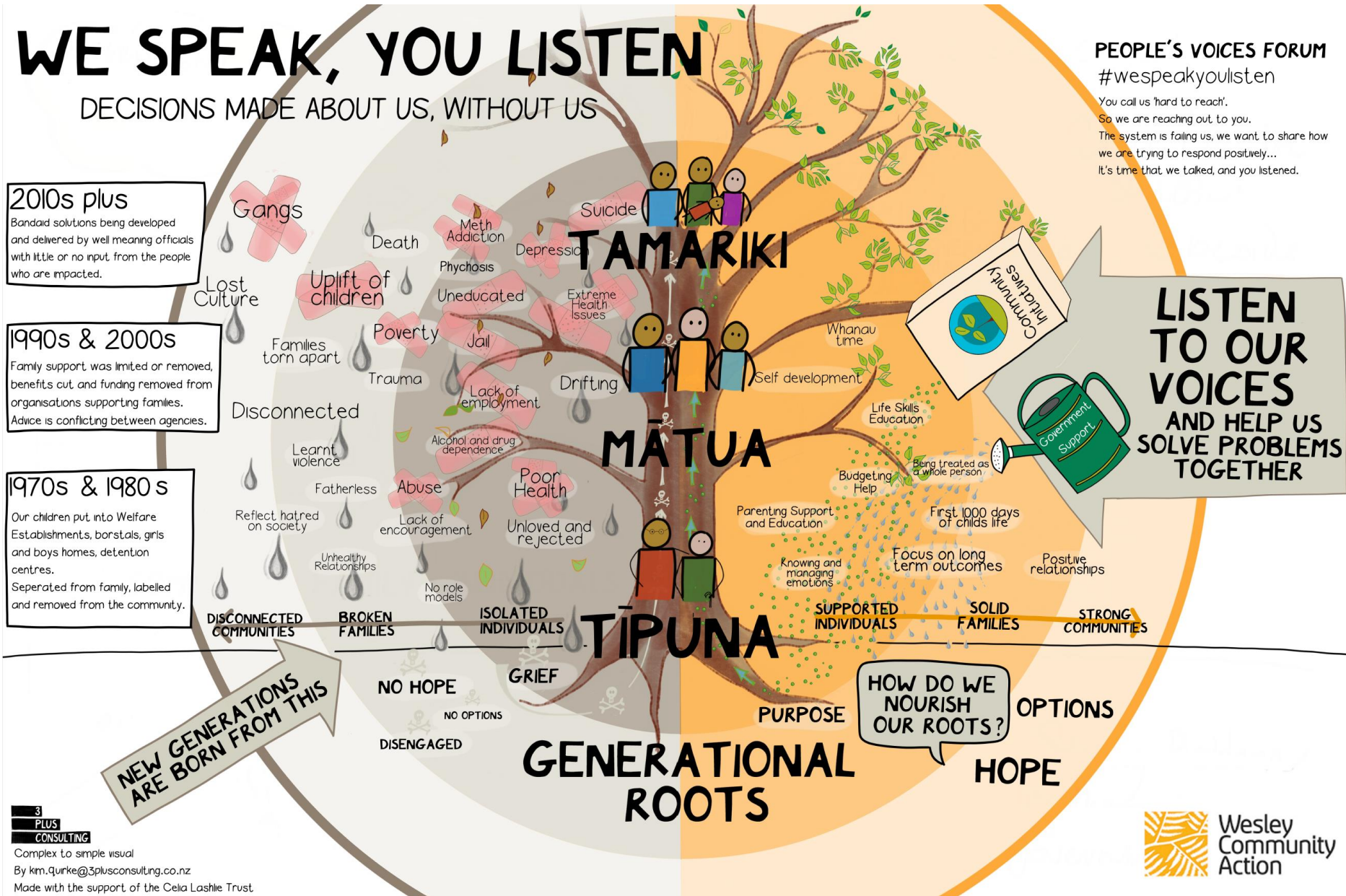
Bandaid solutions being developed and delivered by well meaning officials with little or no input from the people who are impacted.

1990s & 2000s

Family support was limited or removed, benefits cut, and funding removed from organisations supporting families. Advice is conflicting between agencies.

1970s & 1980s

Our children put into Welfare Establishments, borstals, grils and boys homes, detention centres. Separated from family, labelled and removed from the community.



PEOPLE'S VOICES FORUM

#wespeakyoulisten

You call us 'hard to reach'.

So we are reaching out to you.

The system is failing us, we want to share how we are trying to respond positively...

It's time that we talked, and you listened.

LISTEN TO OUR VOICES AND HELP US SOLVE PROBLEMS TOGETHER

NEW GENERATIONS ARE BORN FROM THIS

Breakout question 1.

You've heard about the CRC movement, practices and intentions.

Share stories of how this shows up in your community mahi.

How useful to the wellbeing of children, young people and whānau is it to frame things in this way?

Breakout question 2.

What would you like to see next for
the Child Rich Community
movement?



Kia tau te manaakitanga
Ki runga I tēnā I tēnā o tātou
Kia piki te ora, kia piki te māramatanga
Kia hoki pai atu, Kia hoki pai mai
Tūturu whakamaua kia tina!
Haumi e!
Hui e!
Tāiki e!

Let the blessings and protection
Be bestowed upon all of us
To lift our wellbeing, to lift our understanding
So that we may leave well, and return well.
Let us be united as one!
Bind it, fix it, it is done!